



# ANLY CONTROLLER

## APR-3, -3S / ASV-4 / ASM-170 3-PHASE SEQUENCE VOLTAGE RELAY

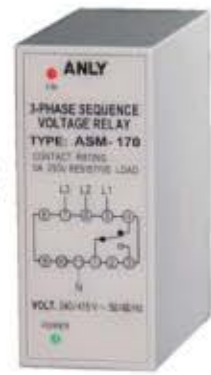
APR-3  
APR-3S



ASV-4



ASM-170



### CHARACTERISTIC :

- Only operational with correct power source voltage and phase sequence
- Suitable for main power source and motor starter circuit to prevent damage from insufficient phase or phase reversal
- Out-of-phase detection while the motor operating\*

### SPECIFICATION :

|                                   |  |
|-----------------------------------|--|
| Operating voltage                 | AC(V) : 220, 240, 380, 415, 440(APR-3)<br>AC(V) : 208~440 (APR-3S, ASV-4, ASM-170) |
| Allowable operating voltage range | 85~110% of rated operating voltage   |
| Rated frequency                   | 50 / 60 Hz   |
| Contact rating                    | 250VAC 10A resistive load(APR-3)<br>250VAC 5A resistive load(others)               |
| Reset time                        | APR-3: none, ASV-4: 300~600msec<br>APR-3S, ASM-170: MAX 200msec                    |
| Power consumption                 | Approx. 2VA  |
| Life                              | Mechanical: 5,000,000 times<br>Electrical: 100,000 times                           |
| Ambient temperature               | -10 ~ +50°C  |
| Ambient humidity                  | MAX 85%RH  |
| Weight                            | APR-3, ASV-4 Approx. 85g<br>APR-3S Approx. 70g<br>ASM-170 Approx. 100g             |

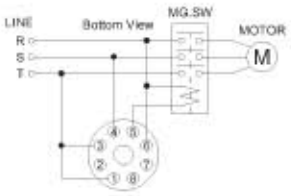
Note: "\*" indicates not applicable to APR-3

### TYPE SELECTION :

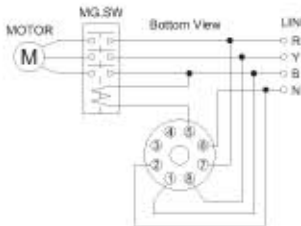
| Type                | APR-3          | APR-3S                        | ASV-4                          | ASM-170                         |
|---------------------|----------------|-------------------------------|--------------------------------|---------------------------------|
| Source type         | 3-Phase 3-Wire | 3-Phase 3-Wire                | 3-Phase 4-Wire                 | 3-Phase 3-Wire or 4-Wire        |
| Number of pins      | 8P             | 8P                            | 8P                             | 11P                             |
| Indicator operating | none           | Red LED(ON)<br>Green LED(PWR) | Red LED(TRIP)<br>Green LED(UP) | Red LED(ON)<br>Green LED(POWER) |

### CONNECTION :

APR-3,3S

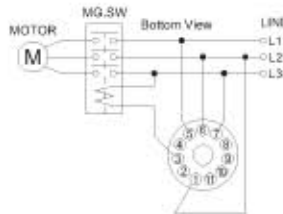


ASV-4

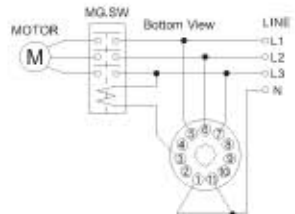


ASM-170

3-Phase 3-Wire



3-Phase 4-Wire



### TIMING CHART :

APR-3,3S



\*For APR-3S only

ASV-4

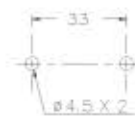
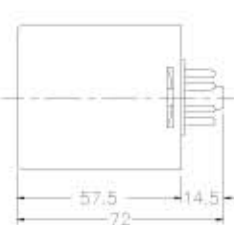
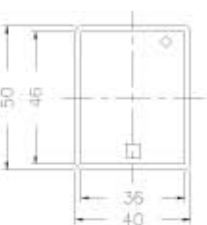


ASM-170



### DIMENSIONS : (mm)

APR-3, APR-3S, ASV-4 N type(Surface Mounting): Using PF085A Socket & FH-3



ASM-170 N type(Surface Mounting): Using PF113A Socket

